

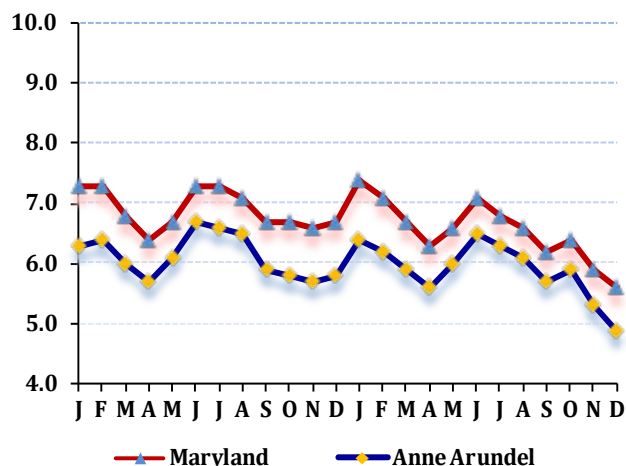
LABOR FORCE STATUS 2012-2013*

Annual Averages

	2012	2013	Change
Labor Force	305,484	306,788	1,304
Employment	286,765	288,652	1,887
Unemployment	18,719	18,136	-583
Unemployment Rate	6.1	5.9	-0.2
Maryland Rate	6.9	6.6	-0.3

--Not Seasonally Adjusted

UNEMPLOYMENT TRENDS - Jan. 2012-Dec. 2013*



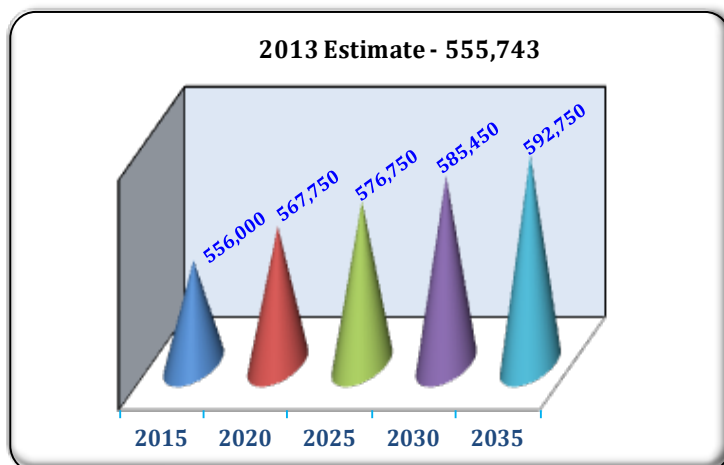
EMPLOYMENT BY SECTOR - 2013 ANNUAL*

Sector	Employment
Total Employment	251,966
Government Total	47,270
Federal	13,175
State	13,327
Local	20,768
Private Sector Total	204,696
Natural Resources & Mining	182
Construction	14,932
Manufacturing	12,235
Trade, Transportation, & Utilities	52,856
Information	2,564
Financial Activities	10,175
Professional & Business Services	40,810
Education & Health Services	29,256
Leisure & Hospitality	32,508
Other Services/Unclassified	9,178

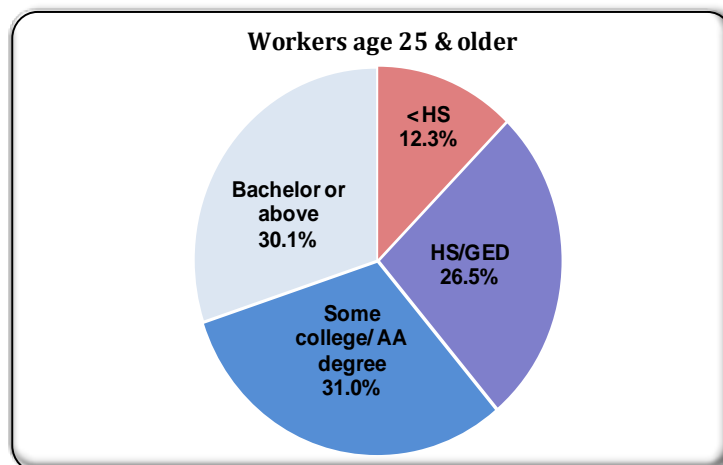
PRIVATE SECTOR GROWTH - Jan. 2012-Dec. 2013*

Industry	Growth
Professional and technical services	2,038
Amusements, gambling, and recreation	1,436
Food services and drinking places	1,132
Ambulatory health care services	618
Specialty trade contractors	570
Social assistance	509
Utilities	406
Food and beverage stores	291
Real estate	271
Educational services	240

POPULATION: 2010 CENSUS & PROJECTIONS ***



WORKFORCE BY EDUCATION LEVEL - 2013Q2**



Sources: *Maryland Department of Labor, Licensing and Regulation **U.S. Census Bureau *** Maryland State Data Center

Martin O'Malley, Governor
Division of Workforce Development and Adult Learning, Office of Workforce Information and Performance, August 2014

Anthony G. Brown, Lt. Governor

Leonard J. Howie III, Secretary

Division of Workforce Development and Adult Learning, Office of Workforce Information and Performance, August 2014