

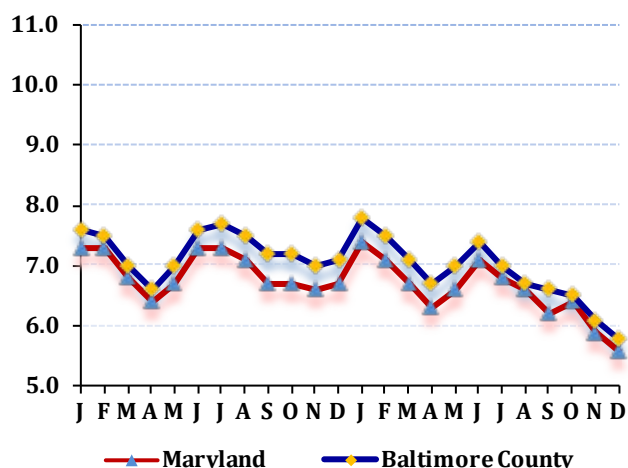
## LABOR FORCE STATUS 2012-2013\*

### Annual Averages

	2012	2013	Change
Labor Force	452,223	453,280	1,057
Employment	419,430	422,190	2,760
Unemployment	32,793	31,090	-1,703
Unemployment Rate	7.3	6.9	0
Maryland Rate	6.9	6.6	-0.3

--Not Seasonally Adjusted

## UNEMPLOYMENT TRENDS - Jan. 2012-Dec. 2013\*



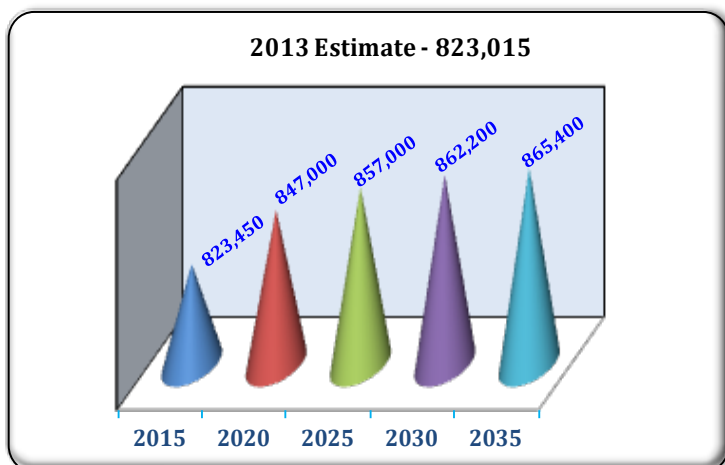
## EMPLOYMENT BY SECTOR - 2013 ANNUAL\*

Sector	Employment
Total Employment	361,042
Government Total	57,364
Federal	15,857
State	11,882
Local	29,625
Private Sector Total	303,678
Natural Resources & Mining	430
Construction	22,181
Manufacturing	16,272
Trade, Transportation, & Utilities	65,834
Information	5,247
Financial Activities	29,531
Professional & Business Services	54,283
Education & Health Services	66,436
Leisure & Hospitality	32,231
Other Services/Unclassified	11,233

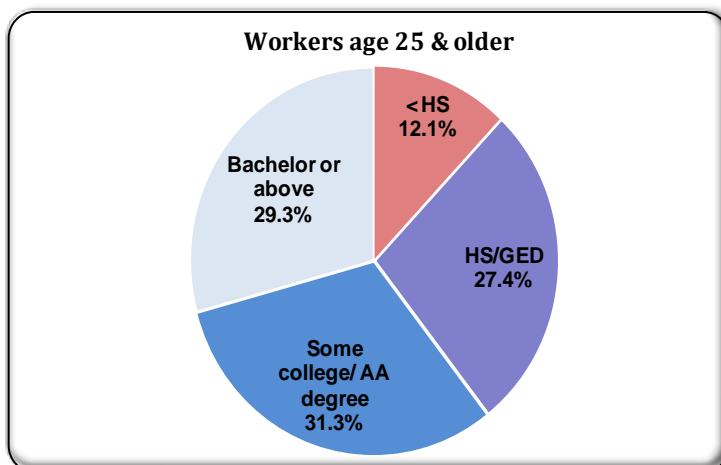
## PRIVATE SECTOR GROWTH - Jan. 2012-Dec. 2013\*

Industry	Growth
Administrative and support services	770
Nursing and residential care facilities	539
Insurance carriers and related activities	521
Amusements, gambling, and recreation	300
Broadcasting, except Internet	281
Management of companies and enterprises	268
Specialty trade contractors	245
Food manufacturing	234
Securities, commodity contracts, investments	180
Food services and drinking places	175

## POPULATION: 2010 CENSUS & PROJECTIONS \*\*\*



## WORKFORCE BY EDUCATION LEVEL - 2013Q2\*\*



Sources: \*Maryland Department of Labor, Licensing and Regulation \*\*U.S. Census Bureau \*\*\* Maryland State Data Center

Martin O'Malley, Governor

Anthony G. Brown, Lt. Governor

Leonard J. Howie III, Secretary

Division of Workforce Development and Adult Learning, Office of Workforce Information and Performance, August 2014