

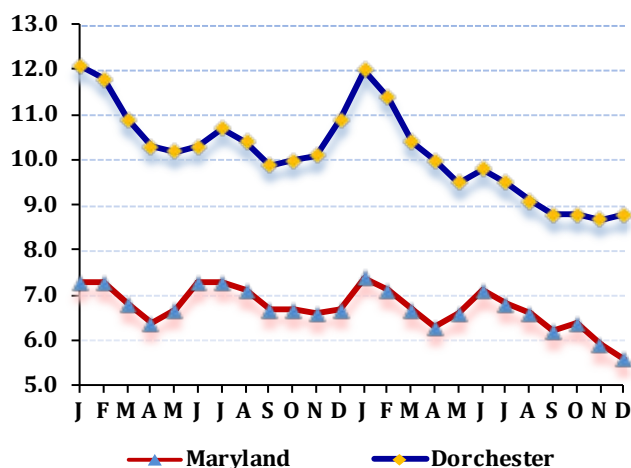
LABOR FORCE STATUS 2012-2013*

Annual Averages

	2012	2013	Change
Labor Force	16,623	16,401	-222
Employment	14,854	14,803	-51
Unemployment	1,769	1,598	-171
Unemployment Rate	10.6	9.7	-0.9
Maryland Rate	6.9	6.6	-0.3

--Not Seasonally Adjusted

UNEMPLOYMENT TRENDS - Jan. 2012-Dec. 2013*



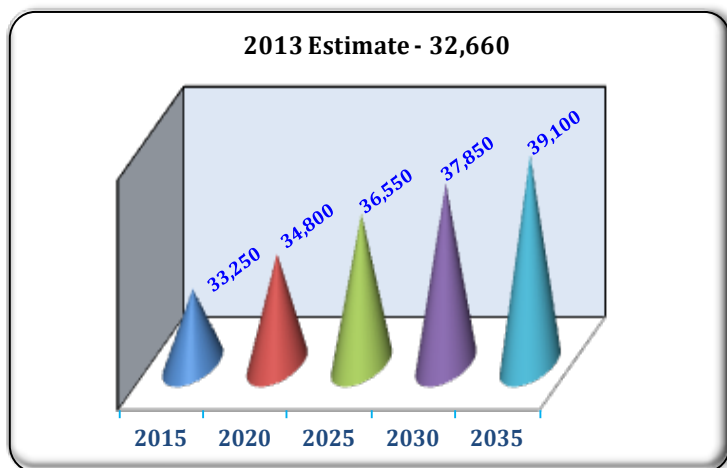
EMPLOYMENT BY SECTOR - 2013 ANNUAL*

Sector	Employment
Total Employment	10,901
Government Total	2,280
Federal	190
State	785
Local	1,305
Private Sector Total	8,621
Natural Resources & Mining	314
Construction	389
Manufacturing	2,076
Trade, Transportation, & Utilities	1,900
Information	47
Financial Activities	297
Professional & Business Services	563
Education & Health Services	1,453
Leisure & Hospitality	1,301
Other Services/Unclassified	281

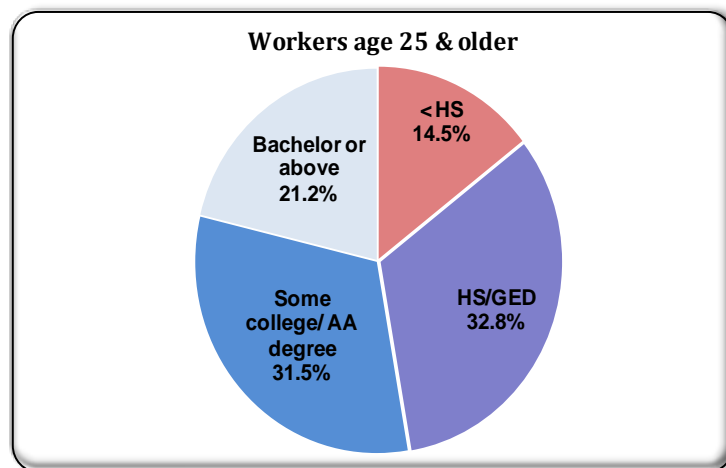
PRIVATE SECTOR GROWTH - Jan. 2012-Dec. 2013*

Industry	Growth
Amusements, gambling, and recreation	63
Administrative and support services	47
Food services and drinking places	46
Ambulatory health care services	42
Fabricated metal product manufacturing	40
Gasoline stations	26
Accommodation	21
Specialty trade contractors	13
Personal and laundry services	13
Nursing and residential care facilities	10

POPULATION: 2010 CENSUS & PROJECTIONS ***



WORKFORCE BY EDUCATION LEVEL - 2013Q2**



Sources: *Maryland Department of Labor, Licensing and Regulation **U.S. Census Bureau *** Maryland State Data Center

Martin O'Malley, Governor
Division of Workforce Development and Adult Learning, Office of Workforce Information and Performance, August 2014

Anthony G. Brown, Lt. Governor

Leonard J. Howie III, Secretary

Division of Workforce Development and Adult Learning, Office of Workforce Information and Performance, August 2014