

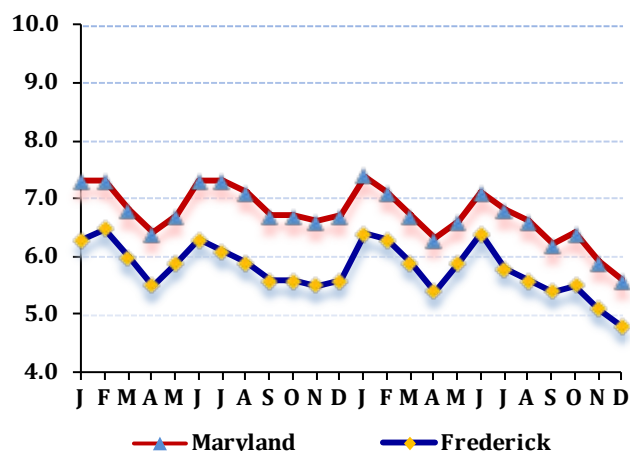
LABOR FORCE STATUS 2012-2013*

Annual Averages

	2012	2013	Change
Labor Force	128,923	128,836	-87
Employment	121,301	121,494	193
Unemployment	7,622	7,342	-280
Unemployment Rate	5.9	5.7	-0.2
Maryland Rate	6.9	6.6	-0.3

--Not Seasonally Adjusted

UNEMPLOYMENT TRENDS - Jan. 2012-Dec. 2013*



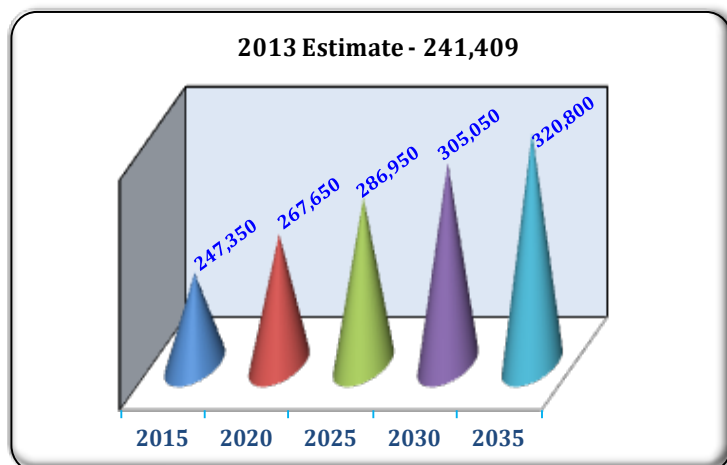
EMPLOYMENT BY SECTOR - 2013 ANNUAL*

Sector	Employment
Total Employment	94,696
Government Total	15,640
Federal	3,796
State	778
Local	11,066
Private Sector Total	79,056
Natural Resources & Mining	617
Construction	8,295
Manufacturing	4,823
Trade, Transportation, & Utilities	16,062
Information	1,140
Financial Activities	6,565
Professional & Business Services	14,931
Education & Health Services	12,594
Leisure & Hospitality	10,897
Other Services/Unclassified	3,132

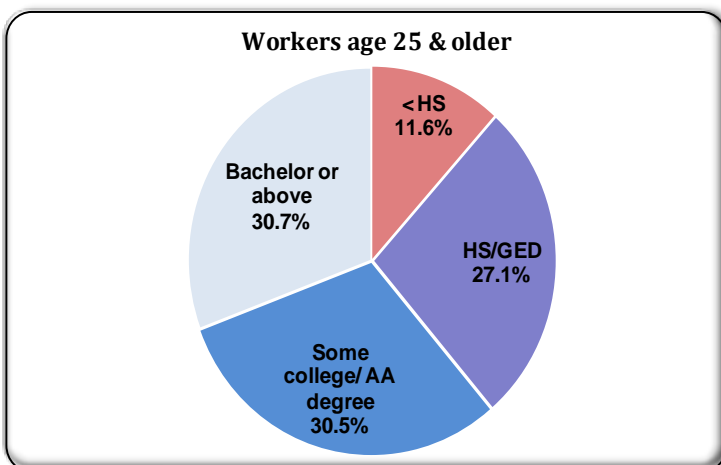
PRIVATE SECTOR GROWTH - Jan. 2012-Dec. 2013*

Industry	Growth
Food services and drinking places	533
Amusements, gambling, and recreation	422
Ambulatory health care services	334
Food and beverage stores	277
Construction of buildings	230
Specialty trade contractors	226
Credit intermediation and related activities	160
Management of companies and enterprises	128
Clothing and clothing accessories stores	83
Electronic markets and agents and brokers	81

POPULATION: 2010 CENSUS & PROJECTIONS ***



WORKFORCE BY EDUCATION LEVEL - 2013Q2**



Sources: *Maryland Department of Labor, Licensing and Regulation **U.S. Census Bureau *** Maryland State Data Center

Martin O'Malley, Governor
Division of Workforce Development and Adult Learning

Anthony G. Brown, Lt. Governor
Office of Workforce Information and Performance

Leonard J. Howie III, Secretary
August 2014