

Harford County Fact Sheet

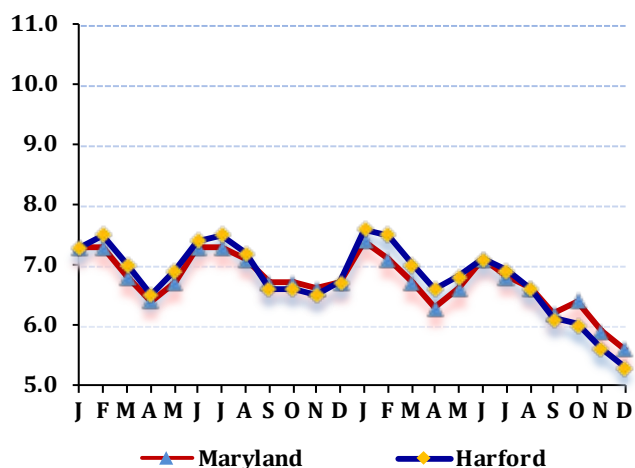
LABOR FORCE STATUS 2012-2013*

Annual Averages

	2012	2013	Change
Labor Force	139,302	139,647	345
Employment	129,601	130,454	853
Unemployment	9,701	9,193	-508
Unemployment Rate	7	6.6	-0.4
Maryland Rate	6.9	6.6	-0.3

--Not Seasonally Adjusted

UNEMPLOYMENT TRENDS - Jan. 2012-Dec. 2013*



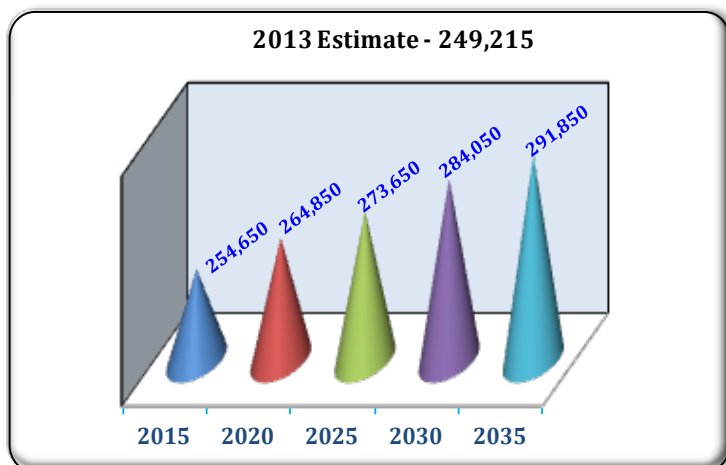
EMPLOYMENT BY SECTOR - 2013 ANNUAL*

Sector	Employment
Total Employment	87,874
Government Total	21,679
Federal	12,100
State	580
Local	8,999
Private Sector Total	66,195
Natural Resources & Mining	254
Construction	5,240
Manufacturing	4,427
Trade, Transportation, & Utilities	19,727
Information	298
Financial Activities	2,969
Professional & Business Services	10,622
Education & Health Services	10,825
Leisure & Hospitality	9,101
Other Services/Unclassified	2,732

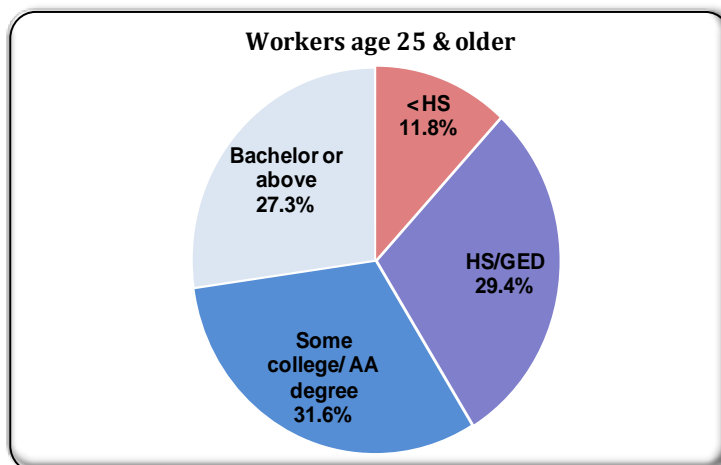
PRIVATE SECTOR GROWTH - Jan. 2012-Dec. 2013*

Industry	Growth
Warehousing and storage	1,239
Professional and technical services	474
Educational services	132
Nursing and residential care facilities	120
Amusements, gambling, and recreation	119
Merchant wholesalers, durable goods	109
Personal and laundry services	75
Credit intermediation and related activities	68
Ambulatory health care services	68
Specialty trade contractors	63

POPULATION: 2010 CENSUS & PROJECTIONS ***



WORKFORCE BY EDUCATION LEVEL - 2013Q2**



Sources: *Maryland Department of Labor, Licensing and Regulation **U.S. Census Bureau *** Maryland State Data Center

Martin O'Malley, Governor
Division of Workforce Development and Adult Learning

Anthony G. Brown, Lt. Governor
Office of Workforce Information and Performance

Leonard J. Howie III, Secretary
August 2014