

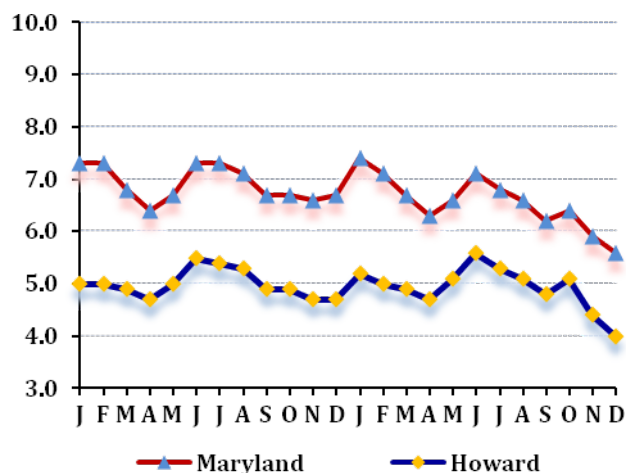
LABOR FORCE STATUS 2012-2013*

Annual Averages

	2012	2013	Change
Labor Force	175,669	176,662	993
Employment	166,863	167,962	1,099
Unemployment	8,806	8,700	-106
Unemployment Rate	5	4.9	0
Maryland Rate	6.9	6.6	-0.3

--Not Seasonally Adjusted

UNEMPLOYMENT TRENDS - Jan. 2012-Dec. 2013*



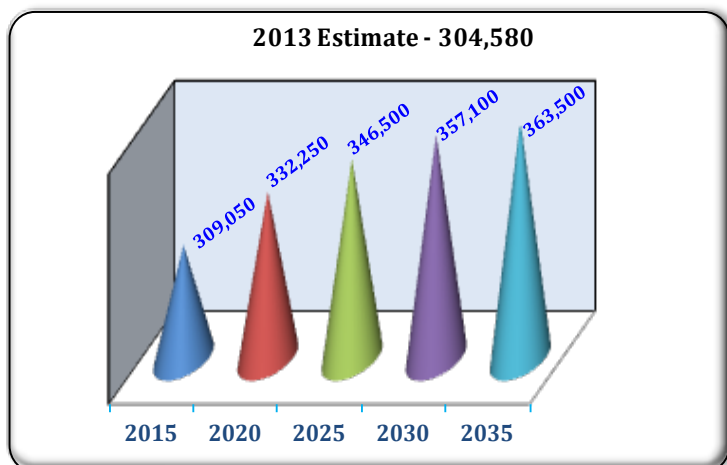
EMPLOYMENT BY SECTOR - 2013 ANNUAL*

Sector	Employment
Total Employment	159,434
Government Total	16,605
Federal	603
State	1,475
Local	14,527
Private Sector Total	142,829
Natural Resources & Mining	291
Construction	10,293
Manufacturing	7,462
Trade, Transportation, & Utilities	33,844
Information	3,826
Financial Activities	8,954
Professional & Business Services	42,540
Education & Health Services	16,348
Leisure & Hospitality	14,810
Other Services/Unclassified	4,461

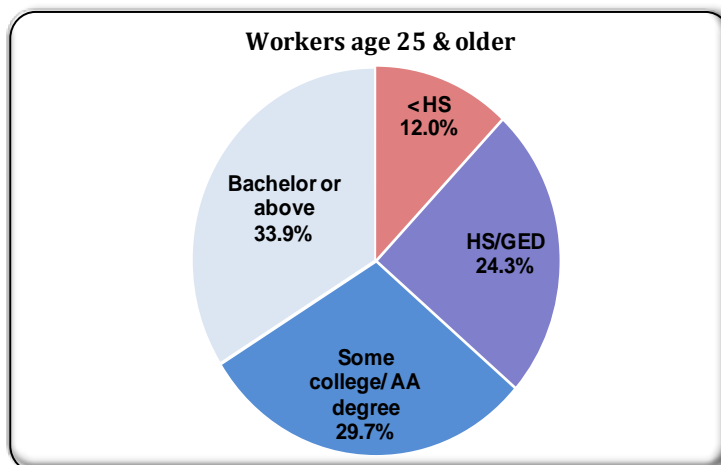
PRIVATE SECTOR GROWTH - Jan. 2012-Dec. 2013*

Industry	Growth
Administrative and support services	1,072
Ambulatory health care services	782
Food services and drinking places	393
Amusements, gambling, and recreation	320
Specialty trade contractors	318
Food manufacturing	299
Electronic markets and agents and brokers	286
Food and beverage stores	220
Construction of buildings	194
Health and personal care stores	187

POPULATION: 2010 CENSUS & PROJECTIONS ***



WORKFORCE BY EDUCATION LEVEL - 2013Q2**



Sources: *Maryland Department of Labor, Licensing and Regulation **U.S. Census Bureau *** Maryland State Data Center

Martin O'Malley, Governor
Division of Workforce Development and Adult Learning, Office of Workforce Information and Performance, August 2014

Anthony G. Brown, Lt. Governor

Leonard J. Howie III, Secretary

Division of Workforce Development and Adult Learning, Office of Workforce Information and Performance, August 2014