

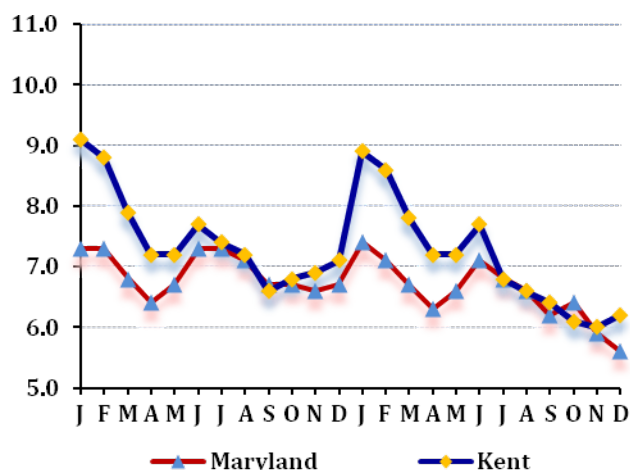
LABOR FORCE STATUS 2012-2013*

Annual Averages

	2012	2013	Change
Labor Force	10,878	10,753	-125
Employment	10,062	9,988	-74
Unemployment	816	765	-51
Unemployment Rate	7.5	7.1	-0.4
Maryland Rate	6.9	6.6	-0.3

--Not Seasonally Adjusted

UNEMPLOYMENT TRENDS - Jan. 2012-Dec. 2013*



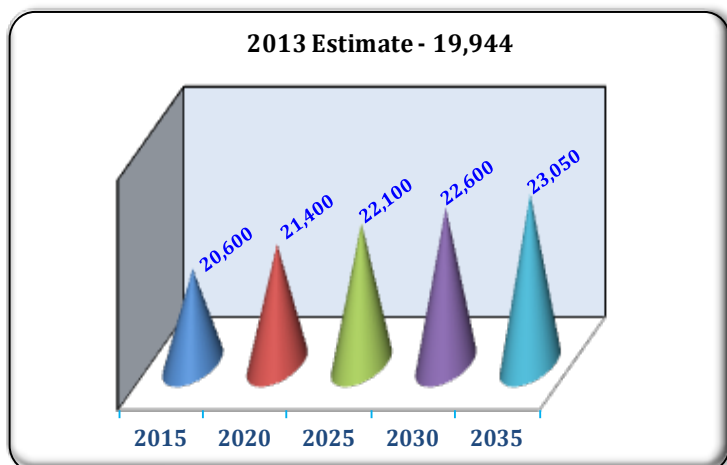
EMPLOYMENT BY SECTOR - 2013 ANNUAL*

Sector	Employment
Total Employment	7,636
Government Total	1,048
Federal	61
State	234
Local	753
Private Sector Total	6,588
Natural Resources & Mining	284
Construction	398
Manufacturing	784
Trade, Transportation, & Utilities	1,153
Information	34
Financial Activities	336
Professional & Business Services	413
Education & Health Services	1,893
Leisure & Hospitality	1,041
Other Services/Unclassified	252

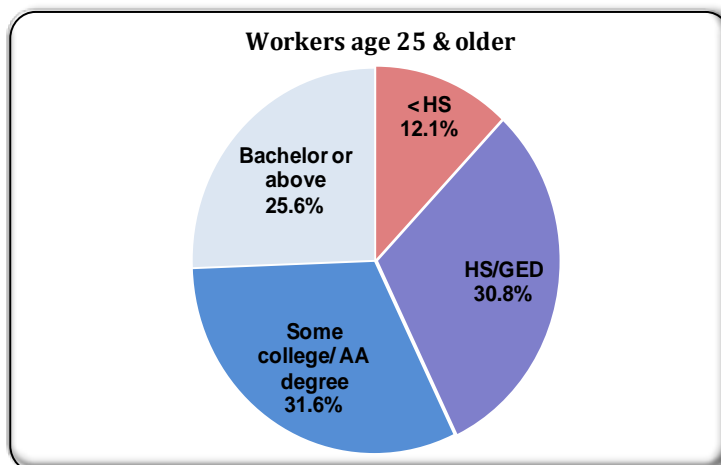
PRIVATE SECTOR GROWTH - Jan. 2012-Dec. 2013*

Industry	Growth
Securities, commodity contracts, investments	33
Merchant wholesalers, nondurable goods	27
Educational services	23
Crop production	14
Social assistance	13
Animal Production and Aquaculture	12
Chemical manufacturing	12
Merchant wholesalers, durable goods	12
Sporting goods, hobby, book and music stores	8
Nonstore retailers	7

POPULATION: 2010 CENSUS & PROJECTIONS ***



WORKFORCE BY EDUCATION LEVEL - 2013Q2**



Sources: *Maryland Department of Labor, Licensing and Regulation **U.S. Census Bureau *** Maryland State Data Center