

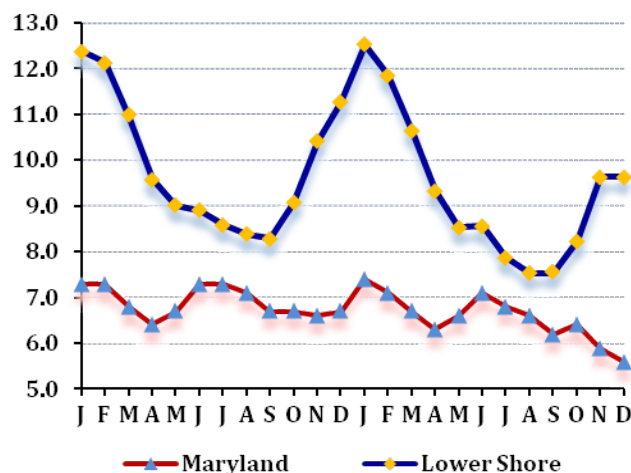
LABOR FORCE STATUS 2012-2013*

Annual Averages

	2012	2013	Change
Labor Force	92,819	92,163	-656
Employment	83,661	83,610	-51
Unemployment	9,158	8,553	-605
Unemployment Rate	9	9.3	0.3
Maryland Rate	6.9	6.6	-0.3

--Not Seasonally Adjusted

UNEMPLOYMENT TRENDS - Jan. 2012-Dec. 2013*



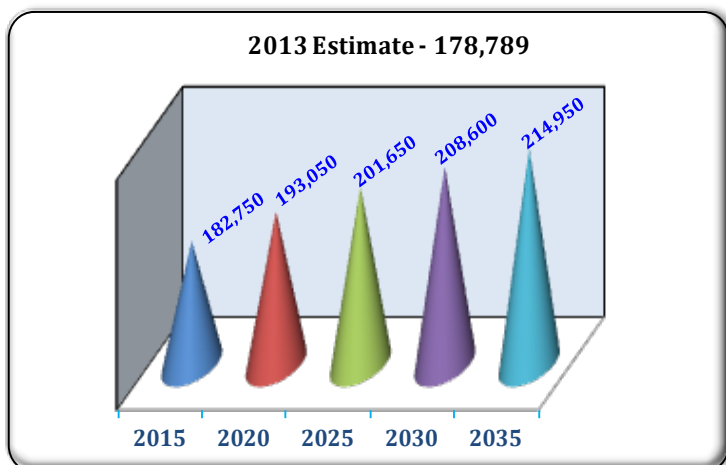
EMPLOYMENT BY SECTOR - 2013 ANNUAL*

Sector	Employment
Total Employment	74,631
Government Total	14,300
Federal	529
State	4,924
Local	8,847
Private Sector Total	60,331
Natural Resources & Mining	584
Construction	3,137
Manufacturing	4,618
Trade, Transportation, & Utilities	14,558
Information	735
Financial Activities	2,911
Professional & Business Services	5,825
Education & Health Services	11,842
Leisure & Hospitality	13,802
Other Services/Unclassified	2,319

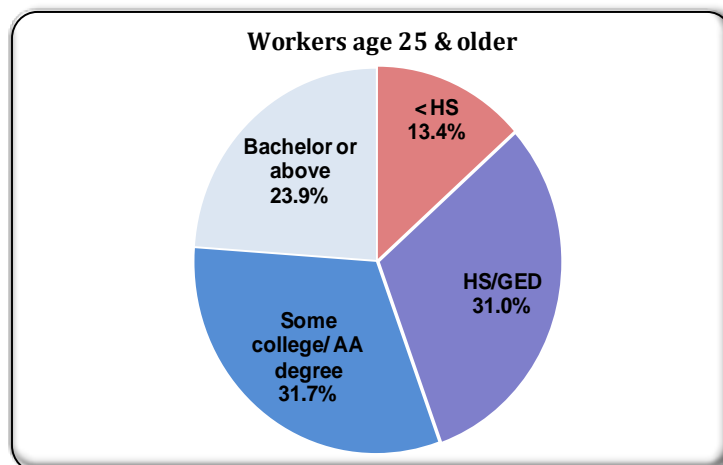
PRIVATE SECTOR GROWTH - Jan. 2012-Dec. 2013*

Industry	Growth
Nursing and residential care facilities	133
Ambulatory health care services	127
Management of companies and enterprises	114
Food and beverage stores	107
Food services and drinking places	96
Specialty trade contractors	88
Health and personal care stores	48
Chemical manufacturing	34
Insurance carriers and related activities	34
Educational services	30

POPULATION: 2010 CENSUS & PROJECTIONS ***



WORKFORCE BY EDUCATION LEVEL - 2013Q2**



Sources: *Maryland Department of Labor, Licensing and Regulation **U.S. Census Bureau *** Maryland State Data Center

Martin O'Malley, Governor
Division of Workforce Development and Adult Learning

Anthony G. Brown, Lt. Governor
Office of Workforce Information and Performance

Leonard J. Howie III, Secretary
August 2014