

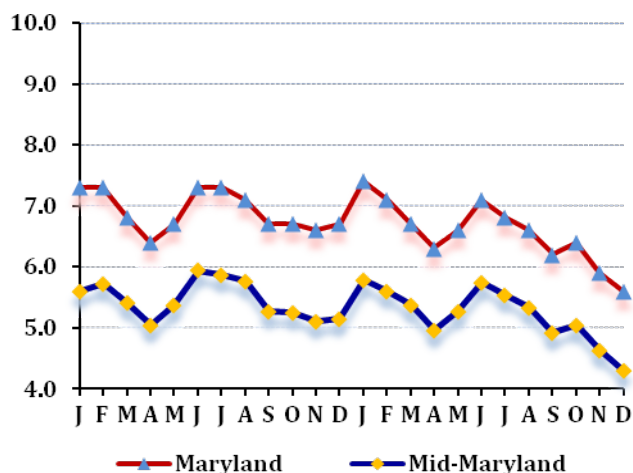
## LABOR FORCE STATUS 2012-2013\*

### Annual Averages

	2012	2013	Change
Labor Force	270,200	271,265	1,065
Employment	255,466	257,148	1,682
Unemployment	14,734	14,117	-617
Unemployment Rate	5.5	5.2	0
Maryland Rate	6.9	6.6	-0.3

--Not Seasonally Adjusted

## UNEMPLOYMENT TRENDS - Jan. 2012-Dec. 2013\*



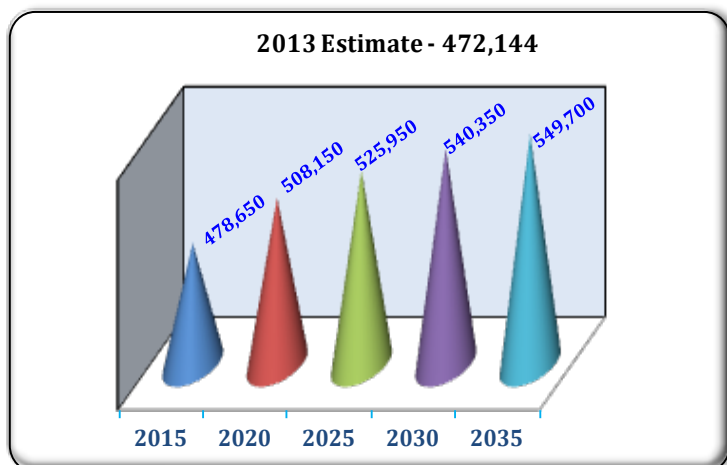
## EMPLOYMENT BY SECTOR - 2013 ANNUAL\*

Sector	Employment
Total Employment	215,578
Government Total	24,906
Federal	873
State	2,820
Local	21,213
Private Sector Total	190,672
Natural Resources & Mining	696
Construction	15,394
Manufacturing	11,514
Trade, Transportation, & Utilities	45,134
Information	4,260
Financial Activities	10,547
Professional & Business Services	49,101
Education & Health Services	25,911
Leisure & Hospitality	21,368
Other Services/Unclassified	6,747

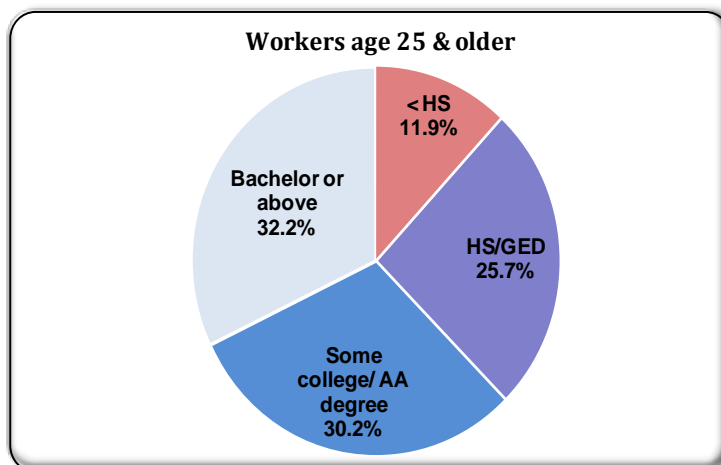
## PRIVATE SECTOR GROWTH - Jan. 2012-Dec. 2013\*

Industry	Growth
Administrative and support services	1,119
Ambulatory health care services	906
Food services and drinking places	530
Amusements, gambling, and recreation	453
Specialty trade contractors	369
Food manufacturing	288
Electronic markets and agents and brokers	288
Food and beverage stores	257
Credit intermediation and related activities	194
Health and personal care stores	187

## POPULATION: 2010 CENSUS & PROJECTIONS \*\*\*



## WORKFORCE BY EDUCATION LEVEL - 2013Q2\*\*



Sources: \*Maryland Department of Labor, Licensing and Regulation \*\*U.S. Census Bureau \*\*\* Maryland State Data Center

Martin O'Malley, Governor  
Division of Workforce Development and Adult Learning, Office of Workforce Information and Performance, August 2014

Anthony G. Brown, Lt. Governor

Leonard J. Howie III, Secretary

Division of Workforce Development and Adult Learning, Office of Workforce Information and Performance, August 2014