

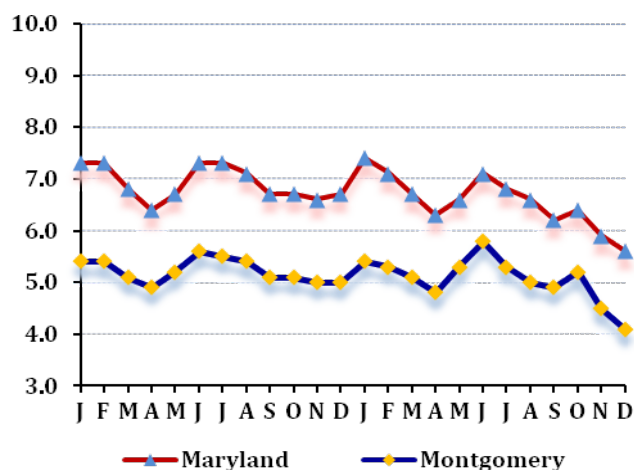
## LABOR FORCE STATUS 2012-2013\*

### Annual Averages

	2012	2013	Change
Labor Force	535,371	535,271	-100
Employment	507,381	508,190	809
Unemployment	27,990	27,081	-909
Unemployment Rate	5.2	5.1	-0.1
Maryland Rate	6.9	6.6	-0.3

--Not Seasonally Adjusted

## UNEMPLOYMENT TRENDS - Jan. 2012-Dec. 2013\*



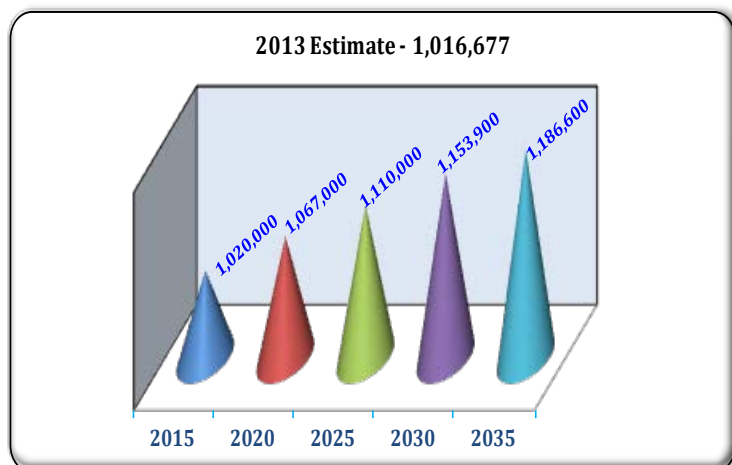
## EMPLOYMENT BY SECTOR - 2013 ANNUAL\*

Sector	Employment
Total Employment	451,809
Government Total	88,683
Federal	46,854
State	1,122
Local	40,707
Private Sector Total	363,126
Natural Resources & Mining	258
Construction	23,363
Manufacturing	11,219
Trade, Transportation, & Utilities	57,607
Information	12,359
Financial Activities	30,479
Professional & Business Services	98,510
Education & Health Services	66,767
Leisure & Hospitality	40,257
Other Services/Unclassified	22,307

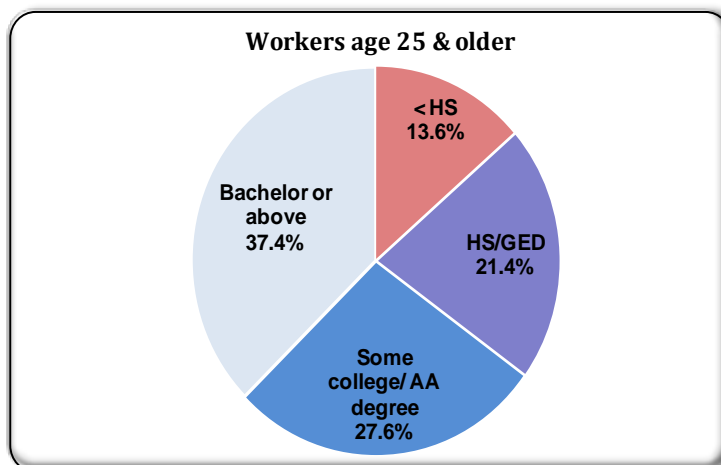
## PRIVATE SECTOR GROWTH - Jan. 2012-Dec. 2013\*

Industry	Growth
Food services and drinking places	754
Ambulatory health care services	605
Securities, commodity contracts, investments	290
Hospitals	268
Food and beverage stores	195
Building material and garden supply stores	168
Administrative and support services	160
Educational services	149
Performing arts and spectator sports	138
Rental and leasing services	130

## POPULATION: 2010 CENSUS & PROJECTIONS \*\*\*



## WORKFORCE BY EDUCATION LEVEL - 2013Q2\*\*



Sources: \*Maryland Department of Labor, Licensing and Regulation \*\*U.S. Census Bureau \*\*\* Maryland State Data Center

Martin O'Malley, Governor  
Division of Workforce Development and Adult Learning, Office of Workforce Information and Performance, August 2014

Anthony G. Brown, Lt. Governor

Leonard J. Howie III, Secretary