

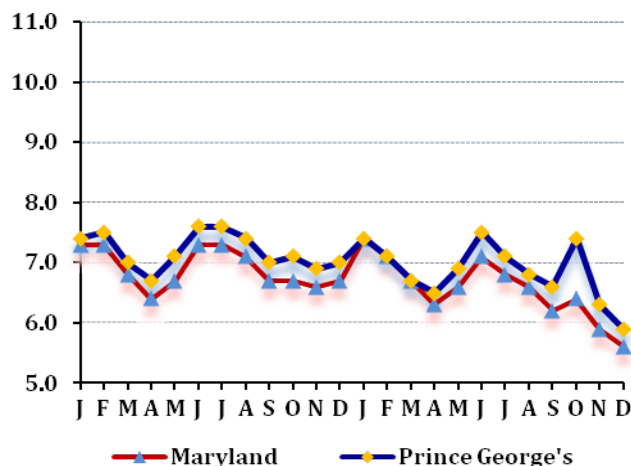
LABOR FORCE STATUS 2012-2013*

Annual Averages

	2012	2013	Change
Labor Force	472,240	471,672	-568
Employment	438,280	439,366	1,086
Unemployment	33,960	32,306	-1,654
Unemployment Rate	7.2	6.8	0
Maryland Rate	6.9	6.6	-0.3

--Not Seasonally Adjusted

UNEMPLOYMENT TRENDS - Jan. 2012-Dec. 2013*



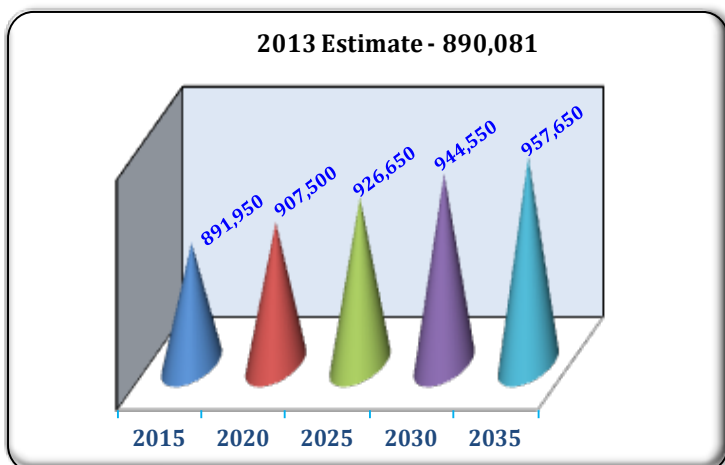
EMPLOYMENT BY SECTOR - 2013 ANNUAL*

Sector	Employment
Total Employment	299,829
Government Total	86,722
Federal	26,672
State	19,982
Local	40,068
Private Sector Total	213,107
Natural Resources & Mining	203
Construction	24,738
Manufacturing	6,716
Trade, Transportation, & Utilities	57,109
Information	4,689
Financial Activities	11,702
Professional & Business Services	38,061
Education & Health Services	30,690
Leisure & Hospitality	29,520
Other Services/Unclassified	9,679

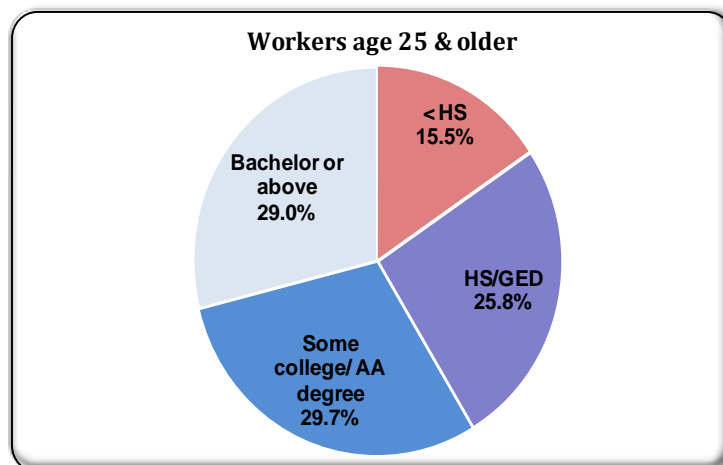
PRIVATE SECTOR GROWTH - Jan. 2012-Dec. 2013*

Industry	Growth
Food services and drinking places	1,056
Transit and ground passenger transportation	357
Insurance carriers and related activities	255
Construction of buildings	249
Ambulatory health care services	228
Waste management and remediation services	185
Performing arts and spectator sports	161
Motor vehicle and parts dealers	131
Management of companies and enterprises	98
Educational services	85

POPULATION: 2010 CENSUS & PROJECTIONS ***



WORKFORCE BY EDUCATION LEVEL - 2013Q2**



Sources: *Maryland Department of Labor, Licensing and Regulation **U.S. Census Bureau *** Maryland State Data Center

Martin O'Malley, Governor
Division of Workforce Development and Adult Learning, Office of Workforce Information and Performance, August 2014

Anthony G. Brown, Lt. Governor

Leonard J. Howie III, Secretary