

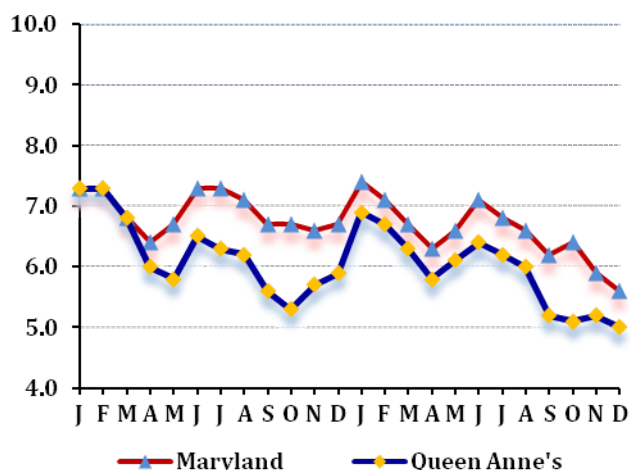
LABOR FORCE STATUS 2012-2013*

Annual Averages

	2012	2013	Change
Labor Force	27,590	27,677	87
Employment	25,870	26,040	170
Unemployment	1,720	1,637	-83
Unemployment Rate	6.2	5.9	-0.3
Maryland Rate	6.9	6.6	-0.3

--Not Seasonally Adjusted

UNEMPLOYMENT TRENDS - Jan. 2012-Dec. 2013*



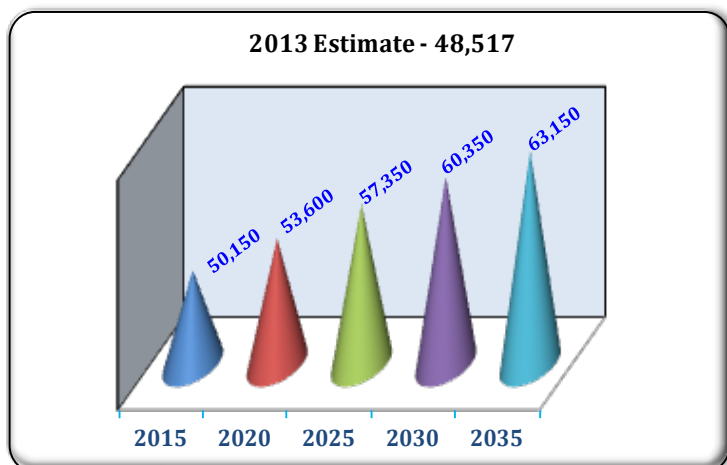
EMPLOYMENT BY SECTOR - 2013 ANNUAL*

Sector	Employment
Total Employment	13,831
Government Total	2,527
Federal	83
State	221
Local	2,223
Private Sector Total	11,304
Natural Resources & Mining	268
Construction	995
Manufacturing	948
Trade, Transportation, & Utilities	3,494
Information	31
Financial Activities	388
Professional & Business Services	999
Education & Health Services	1,082
Leisure & Hospitality	2,506
Other Services/Unclassified	593

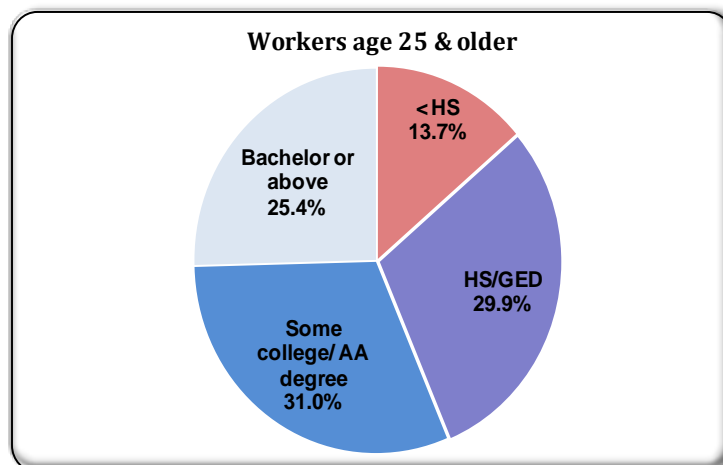
PRIVATE SECTOR GROWTH - Jan. 2012-Dec. 2013*

Industry	Growth
Ambulatory health care services	42
Clothing and clothing accessories stores	38
Specialty trade contractors	26
Motor vehicle and parts dealers	17
Social assistance	17
Amusements, gambling, and recreation	17
Truck transportation	15
Food manufacturing	14
Merchant wholesalers, durable goods	12
Crop production	11

POPULATION: 2010 CENSUS & PROJECTIONS ***



WORKFORCE BY EDUCATION LEVEL - 2013Q2**



Sources: *Maryland Department of Labor, Licensing and Regulation **U.S. Census Bureau *** Maryland State Data Center