

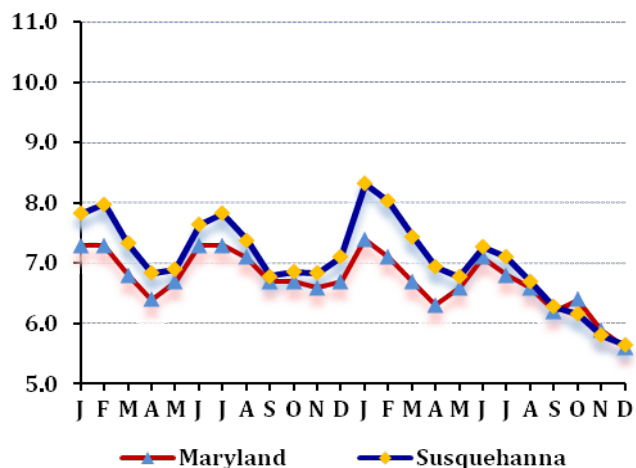
LABOR FORCE STATUS 2012-2013*

Annual Averages

	2012	2013	Change
Labor Force	190,174	190,849	675
Employment	176,331	177,723	1,392
Unemployment	13,843	13,126	-717
Unemployment Rate	7.3	6.9	0
Maryland Rate	6.9	6.6	-0.3

--Not Seasonally Adjusted

UNEMPLOYMENT TRENDS - Jan. 2012-Dec. 2013*



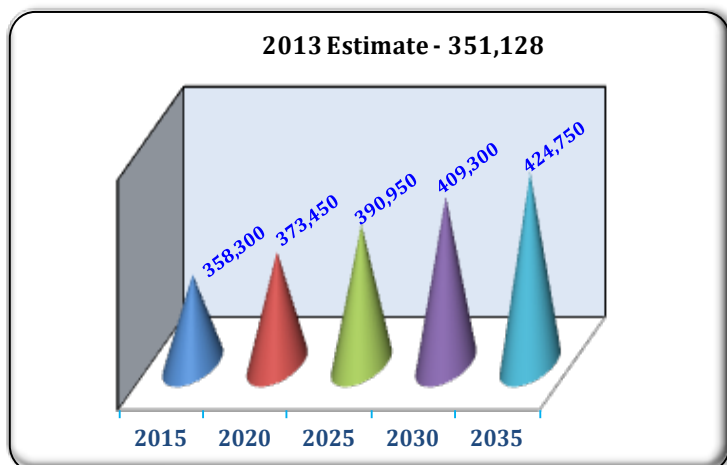
EMPLOYMENT BY SECTOR - 2013 ANNUAL*

Sector	Employment
Total Employment	118,135
Government Total	27,885
Federal	13,764
State	1,135
Local	12,986
Private Sector Total	90,250
Natural Resources & Mining	1,109
Construction	6,345
Manufacturing	8,681
Trade, Transportation, & Utilities	26,404
Information	426
Financial Activities	3,624
Professional & Business Services	12,265
Education & Health Services	14,812
Leisure & Hospitality	13,054
Other Services/Unclassified	3,530

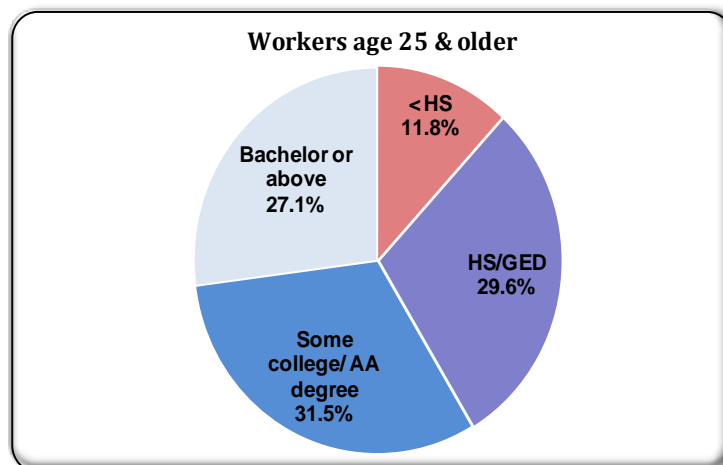
PRIVATE SECTOR GROWTH - Jan. 2012-Dec. 2013*

Industry	Growth
Warehousing and storage	1,306
Professional and technical services	706
Amusements, gambling, and recreation	279
Educational services	161
Hospitals	152
Nursing and residential care facilities	123
Merchant wholesalers, durable goods	119
Food services and drinking places	118
Truck transportation	116
Specialty trade contractors	104

POPULATION: 2010 CENSUS & PROJECTIONS ***



WORKFORCE BY EDUCATION LEVEL - 2013Q2**



Sources: *Maryland Department of Labor, Licensing and Regulation **U.S. Census Bureau *** Maryland State Data Center

Martin O'Malley, Governor
Division of Workforce Development and Adult Learning, Office of Workforce Information and Performance, August 2014

Anthony G. Brown, Lt. Governor

Leonard J. Howie III, Secretary

Division of Workforce Development and Adult Learning, Office of Workforce Information and Performance, August 2014