

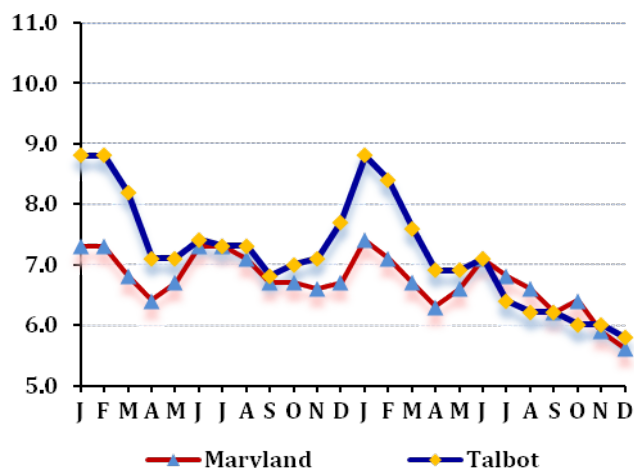
LABOR FORCE STATUS 2012-2013*

Annual Averages

	2012	2013	Change
Labor Force	18,860	18,714	-146
Employment	17,438	17,435	-3
Unemployment	1,422	1,279	-143
Unemployment Rate	7.5	6.8	-0.7
Maryland Rate	6.9	6.6	-0.3

--Not Seasonally Adjusted

UNEMPLOYMENT TRENDS - Jan. 2012-Dec. 2013*



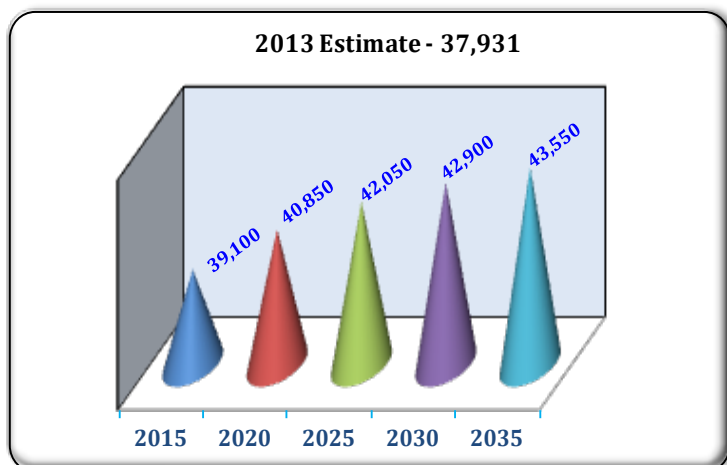
EMPLOYMENT BY SECTOR - 2013 ANNUAL*

Sector	Employment
Total Employment	18,369
Government Total	1,857
Federal	218
State	236
Local	1,403
Private Sector Total	16,512
Natural Resources & Mining	81
Construction	872
Manufacturing	983
Trade, Transportation, & Utilities	3,388
Information	193
Financial Activities	842
Professional & Business Services	2,594
Education & Health Services	3,876
Leisure & Hospitality	2,894
Other Services/Unclassified	789

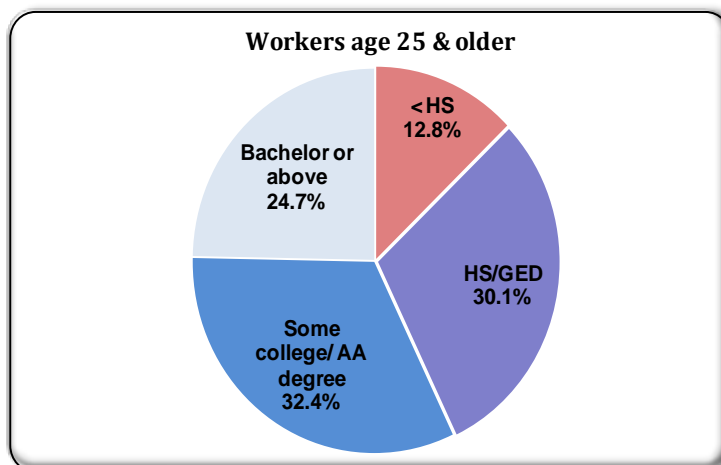
PRIVATE SECTOR GROWTH - Jan. 2012-Dec. 2013*

Industry	Growth
Amusements, gambling, and recreation	192
Ambulatory health care services	138
Administrative and support services	51
Building material and garden supply stores	30
Specialty trade contractors	28
Miscellaneous store retailers	19
Insurance carriers and related activities	17
Food and beverage stores	15
Gasoline stations	12
Chemical manufacturing	11

POPULATION: 2010 CENSUS & PROJECTIONS ***



WORKFORCE BY EDUCATION LEVEL - 2013Q2**



Sources: *Maryland Department of Labor, Licensing and Regulation **U.S. Census Bureau *** Maryland State Data Center

Martin O'Malley, Governor
Division of Workforce Development and Adult Learning, Office of Workforce Information and Performance, August 2014

Anthony G. Brown, Lt. Governor

Leonard J. Howie III, Secretary