

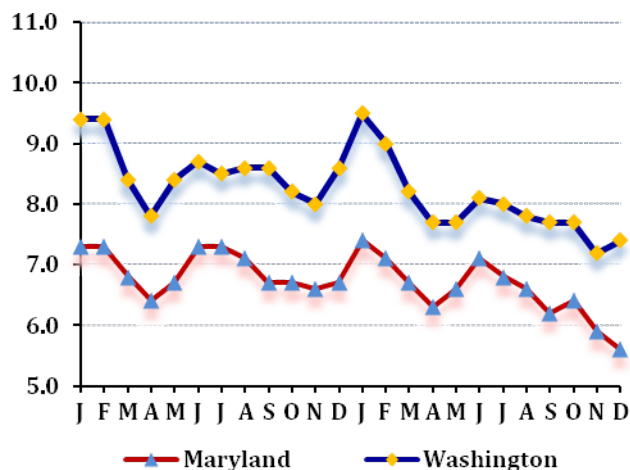
LABOR FORCE STATUS 2012-2013*

Annual Averages

	2012	2013	Change
Labor Force	71,314	71,252	-62
Employment	65,222	65,557	335
Unemployment	6,092	5,695	-397
Unemployment Rate	8.5	8	-0.5
Maryland Rate	6.9	6.6	-0.3

--Not Seasonally Adjusted

UNEMPLOYMENT TRENDS - Jan. 2012-Dec. 2013*



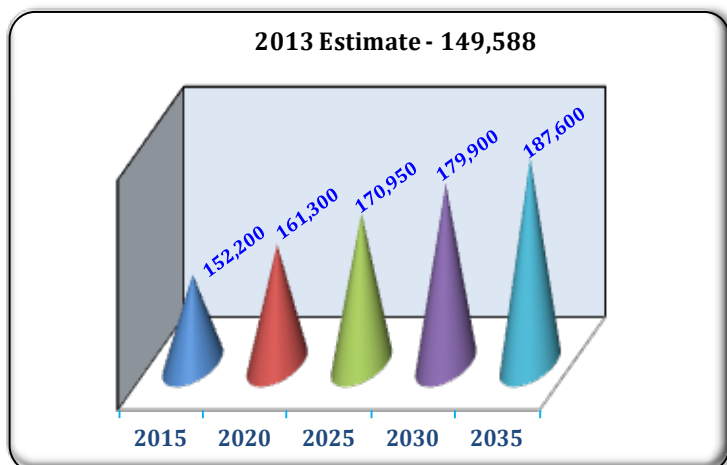
EMPLOYMENT BY SECTOR - 2013 ANNUAL*

Sector	Employment
Total Employment	66,777
Government Total	9,123
Federal	634
State	2,609
Local	5,880
Private Sector Total	57,654
Natural Resources & Mining	147
Construction	2,750
Manufacturing	6,064
Trade, Transportation, & Utilities	16,905
Information	829
Financial Activities	7,056
Professional & Business Services	5,425
Education & Health Services	10,362
Leisure & Hospitality	6,548
Other Services/Unclassified	1,568

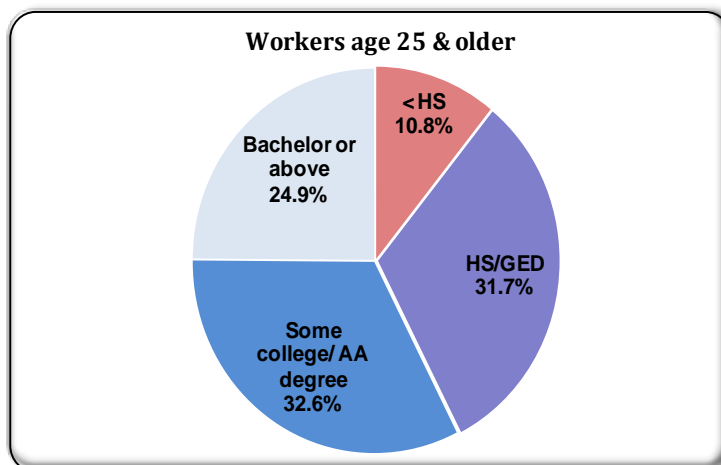
PRIVATE SECTOR GROWTH - Jan. 2012-Dec. 2013*

Industry	Growth
Management of companies and enterprises	248
Administrative and support services	247
Transportation equipment manufacturing	116
Food services and drinking places	112
Social assistance	96
Merchant wholesalers, durable goods	82
Couriers and messengers	80
Food and beverage stores	66
Electronic markets and agents and brokers	54
Health and personal care stores	50

POPULATION: 2010 CENSUS & PROJECTIONS ***



WORKFORCE BY EDUCATION LEVEL - 2013Q2**



Sources: *Maryland Department of Labor, Licensing and Regulation **U.S. Census Bureau *** Maryland State Data Center

Martin O'Malley, Governor
Division of Workforce Development and Adult Learning

Anthony G. Brown, Lt. Governor
Office of Workforce Information and Performance

Leonard J. Howie III, Secretary
August 2014