

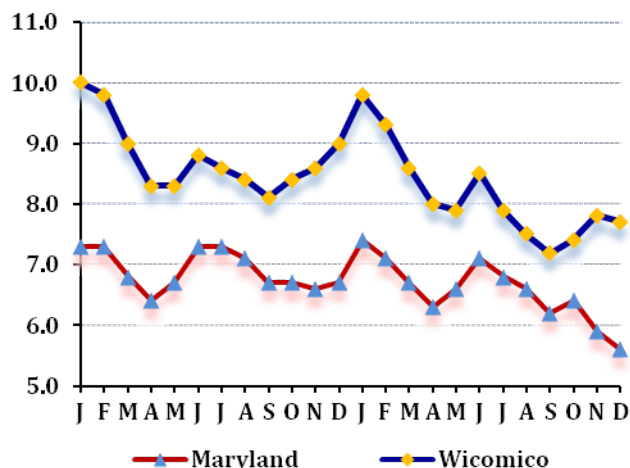
LABOR FORCE STATUS 2012-2013*

Annual Averages

	2012	2013	Change
Labor Force	53,302	52,799	-503
Employment	48,628	48,510	-118
Unemployment	4,674	4,289	-385
Unemployment Rate	8.8	8.1	-0.7
Maryland Rate	6.9	6.6	-0.3

--Not Seasonally Adjusted

UNEMPLOYMENT TRENDS - Jan. 2012-Dec. 2013*



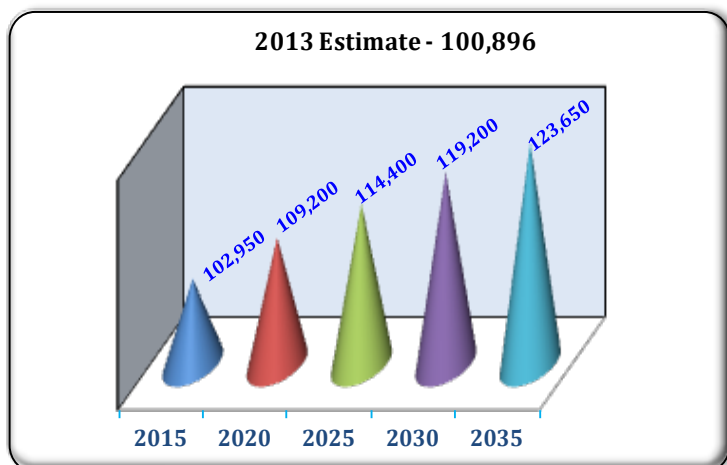
EMPLOYMENT BY SECTOR - 2013 ANNUAL*

Sector	Employment
Total Employment	44,126
Government Total	7,762
Federal	297
State	2,728
Local	4,737
Private Sector Total	36,364
Natural Resources & Mining	304
Construction	1,883
Manufacturing	3,760
Trade, Transportation, & Utilities	9,419
Information	578
Financial Activities	1,599
Professional & Business Services	4,182
Education & Health Services	8,643
Leisure & Hospitality	4,508
Other Services/Unclassified	1,488

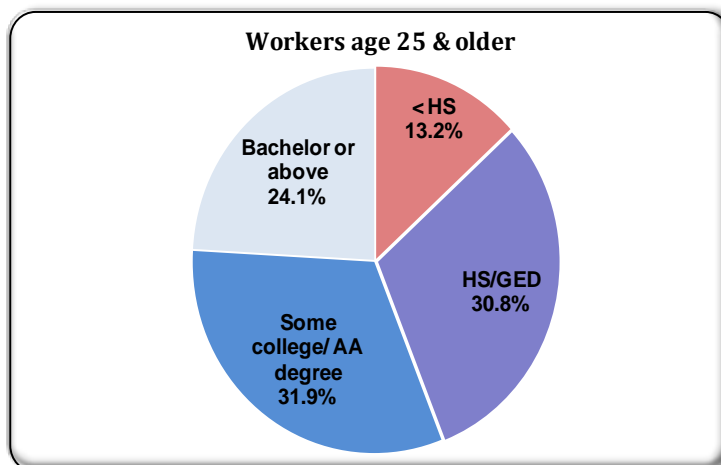
PRIVATE SECTOR GROWTH - Jan. 2012-Dec. 2013*

Industry	Growth
Nursing and residential care facilities	113
Management of companies and enterprises	106
Food and beverage stores	93
Specialty trade contractors	91
Ambulatory health care services	78
Health and personal care stores	52
Food services and drinking places	44
Chemical manufacturing	34
Motor vehicle and parts dealers	28
Gasoline stations	27

POPULATION: 2010 CENSUS & PROJECTIONS ***



WORKFORCE BY EDUCATION LEVEL - 2013Q2**



Sources: *Maryland Department of Labor, Licensing and Regulation **U.S. Census Bureau *** Maryland State Data Center

Martin O'Malley, Governor
Division of Workforce Development and Adult Learning, Office of Workforce Information and Performance, August 2014

Anthony G. Brown, Lt. Governor

Leonard J. Howie III, Secretary