

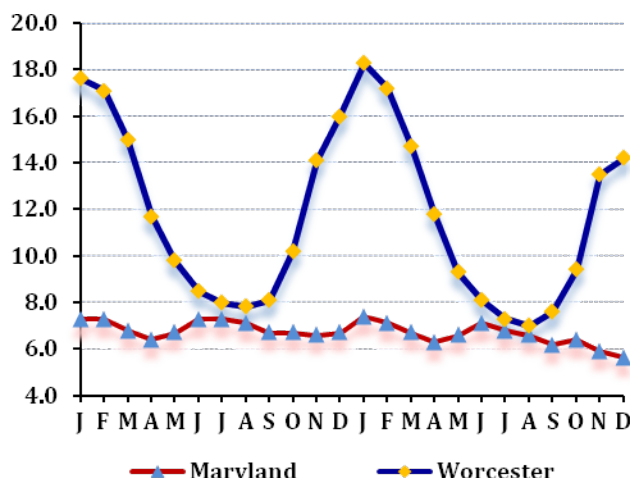
## LABOR FORCE STATUS 2012-2013\*

### Annual Averages

	2012	2013	Change
Labor Force	28,753	28,703	-50
Employment	25,404	25,495	91
Unemployment	3,349	3,208	-141
Unemployment Rate	11.6	11.2	-0.4
Maryland Rate	6.9	6.6	-0.3

--Not Seasonally Adjusted

## UNEMPLOYMENT TRENDS - Jan. 2012-Dec. 2013\*



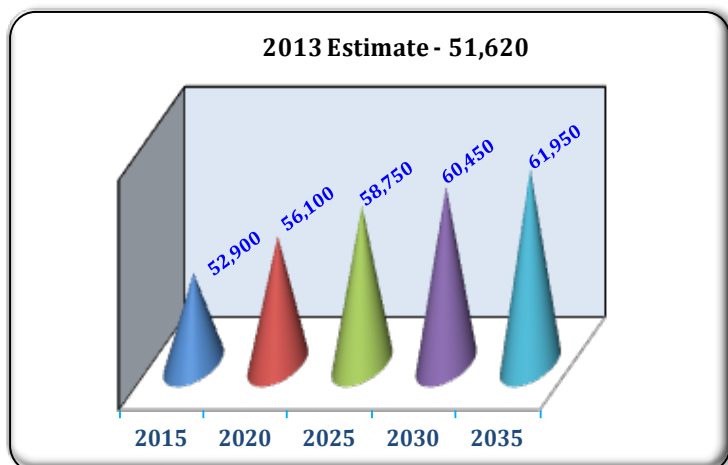
## EMPLOYMENT BY SECTOR - 2013 ANNUAL\*

Sector	Employment
Total Employment	23,890
Government Total	3,520
Federal	187
State	149
Local	3,184
Private Sector Total	20,370
Natural Resources & Mining	75
Construction	1,011
Manufacturing	679
Trade, Transportation, & Utilities	4,114
Information	134
Financial Activities	1,134
Professional & Business Services	1,408
Education & Health Services	2,130
Leisure & Hospitality	8,927
Other Services/Unclassified	758

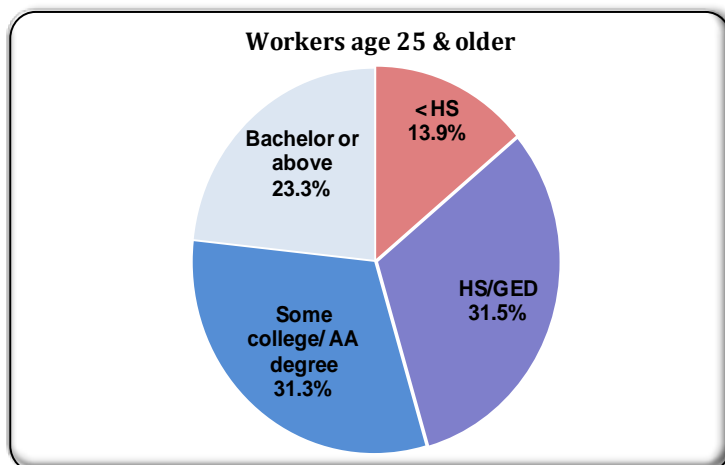
## PRIVATE SECTOR GROWTH - Jan. 2012-Dec. 2013\*

Industry	Growth
Food services and drinking places	72
Professional and technical services	59
Heavy and civil engineering construction	32
Ambulatory health care services	30
Merchant wholesalers, nondurable goods	28
General merchandise stores	26
Repair and maintenance	26
Educational services	25
Insurance carriers and related activities	16
Furniture and home furnishings stores	14

## POPULATION: 2010 CENSUS & PROJECTIONS \*\*\*



## WORKFORCE BY EDUCATION LEVEL - 2013Q2\*\*



Sources: \*Maryland Department of Labor, Licensing and Regulation \*\*U.S. Census Bureau \*\*\* Maryland State Data Center

Martin O'Malley, Governor  
Division of Workforce Development and Adult Learning, Office of Workforce Information and Performance, August 2014

Anthony G. Brown, Lt. Governor

Leonard J. Howie III, Secretary

Division of Workforce Development and Adult Learning, Office of Workforce Information and Performance, August 2014